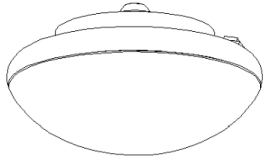


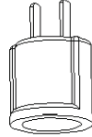
9W/GTW

## FIXTURE WITH OUTLET TO SOCKET ADAPTER

• LED Fixture



• Outlet-to-Socket Adapter

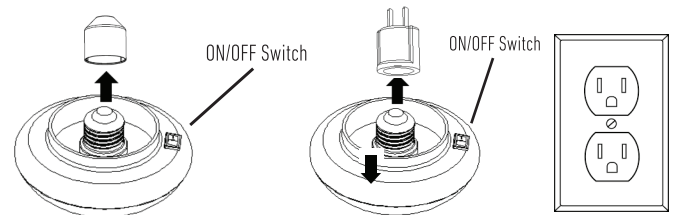


• Lamp Base Protective Cover



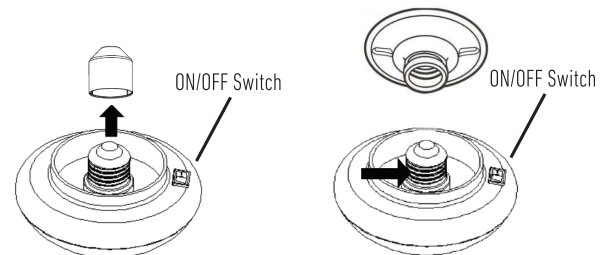
### IMPORTANT SAFETY INSTRUCTIONS

Carefully read and understand the information on this instruction sheet before beginning assembly and installation. Failure to do so could lead to an electrical hazard.



#### OPTION A - Outlet Installation

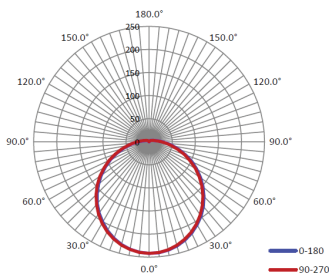
1. Remove the lamp base protective cover from the LED fixture.
2. Flip the ON/OFF switch to the OFF position on the LED fixture and wall switch (if applicable).
3. Screw the LED socket adapter onto the LED fixture.
4. Plug the LED fixture into the wall outlet.
5. Turn the wall switch (if applicable) and the ON/OFF switch on the LED fixture to the ON position.



#### OPTION B - Socket (E26) Installation

1. Remove the lamp base protective cover from the LED fixture.
2. Flip the ON/OFF switch to the OFF position on the LED fixture and wall switch (if applicable).
3. Screw the LED fixture clockwise into a E26 socket.
4. Turn the wall switch (if applicable) and the ON/OFF switch on the LED fixture to the ON position.

#### Luminous Intensity Distribution Diagram



Orientation	Beam Angle (°)	I <sub>max</sub> (cd)
Downward	116.2	242

**LIMITED WARRANTY:** Each Greenlite™ LED fixture is warranted to be free from defects in workmanship and material for 5 years. If it fails to do so, Greenlite™ will, at its election, provide a replacement or equivalent. Please visit [www.greenliteusa.com](http://www.greenliteusa.com) to initiate a warranty claim. For all customer service queries, please contact our customer service team, Monday-Friday at [info@greenliteusa.com](mailto:info@greenliteusa.com) or call 1-844-695-9090 from 9:00 AM to 5:00 PM (EST). This limited warranty does not cover fixtures subject to accident, neglect, abuse, misuse or acts of God. Replacement or refund is your sole remedy.