

Model NO. 3.5W/DL/FLAG

## LED DESK LAMP

### IMPORTANT SAFETY INSTRUCTIONS

Carefully read and understand the information on this instruction sheet before beginning assembly and installation. Failure to do so could lead to an electrical hazard.

#### CAUTION - TO PREVENT ELECTRICAL SHOCK.

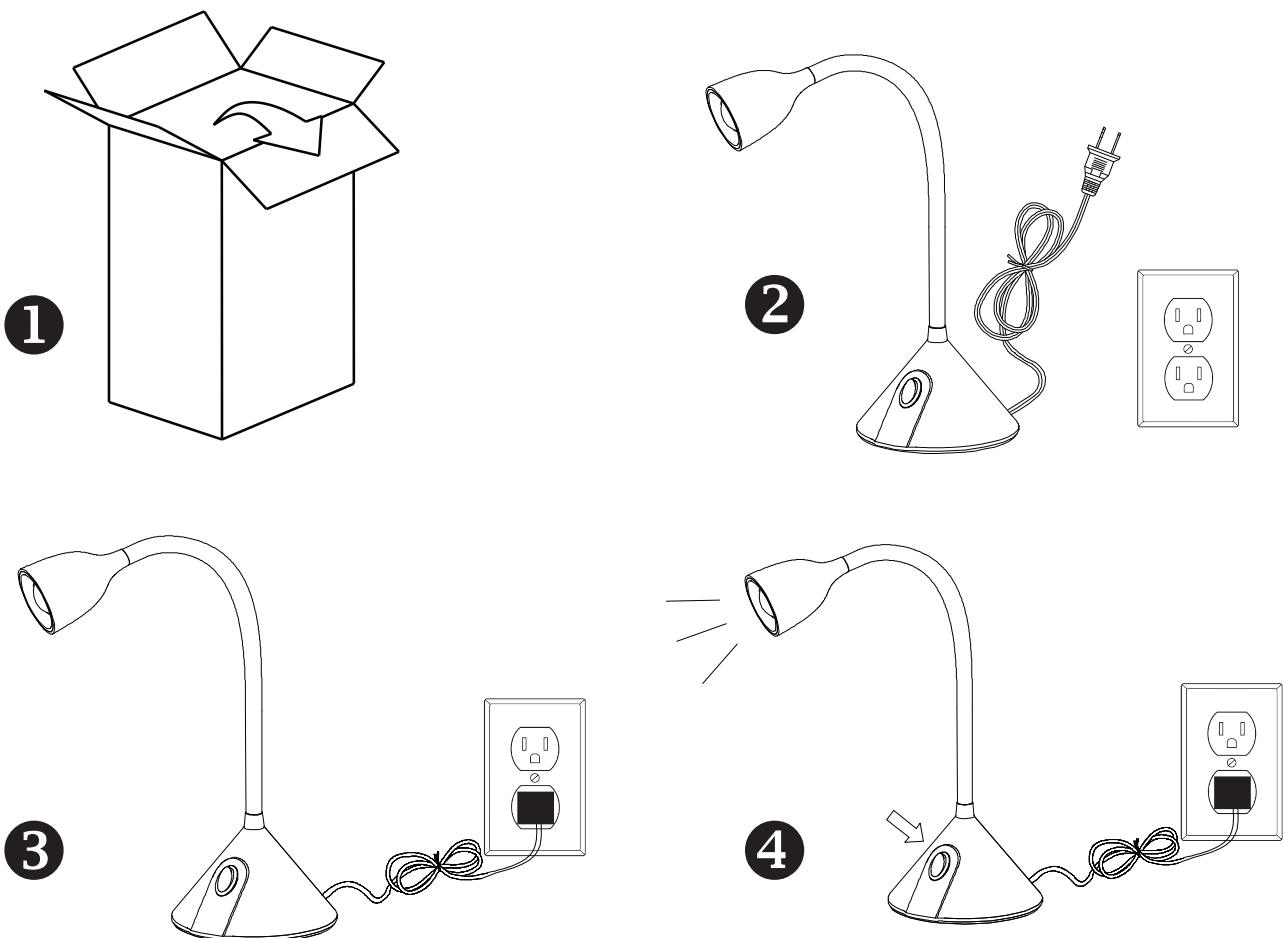
Never use with an extension cord unless plug can be fully inserted. Do not alter the plug. Regularly check the cord and all other parts for damage. If any part is damaged the product should not be used.

Unplug the power plug when assembling. Do not disassemble the product, as the light diodes can cause damage to the eyes.

Do not touch the light source when the light is ON. Do not operate this fixture with a missing or damaged cover or housing.

Cleaning: Use a damp cloth, never use a strong cleaning agent.

THIS DEVICE IS NOT INTENDED FOR USE IN DAMP OR WET LOCATIONS. Risk of electric shock - use only for indoor and dry locations. Do not immerse in water.



**LIMITED WARRANTY:** This product is warranted to be free from defects in workmanship and material for 3 years. If it fails to do so, Greenlite™ will send you, at its election, a replacement product or refund your original purchase price upon receipt of the returned product, register receipt and proof of purchase. Please visit [www.greenliteusa.com](http://www.greenliteusa.com) to find out how to return the fixture. Do not return this fixture to the retailer. This limited warranty does not cover fixtures subject to accident, neglect, abuse, misuse or acts of God. Replacement or refund is your sole remedy.

For all enquiries, please contact our customer service team at [info@greenliteusa.com](mailto:info@greenliteusa.com) or 1-844-695-9090 from 9:00 AM to 5:00 PM EST.

[www.greenliteusa.com](http://www.greenliteusa.com)